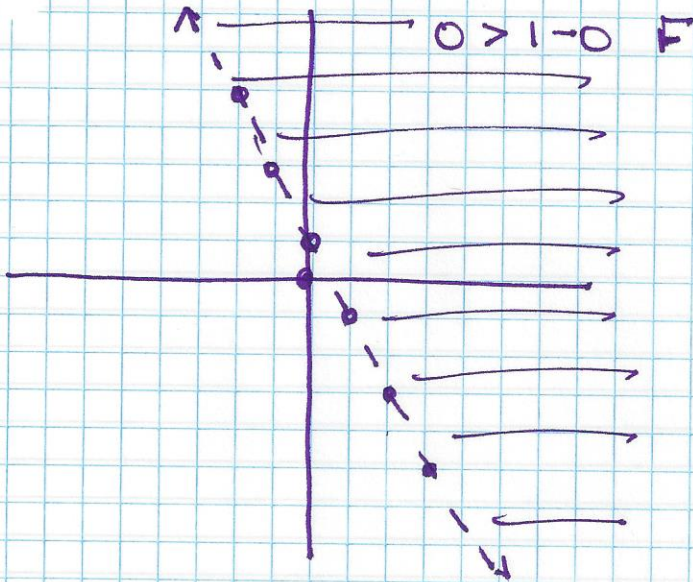
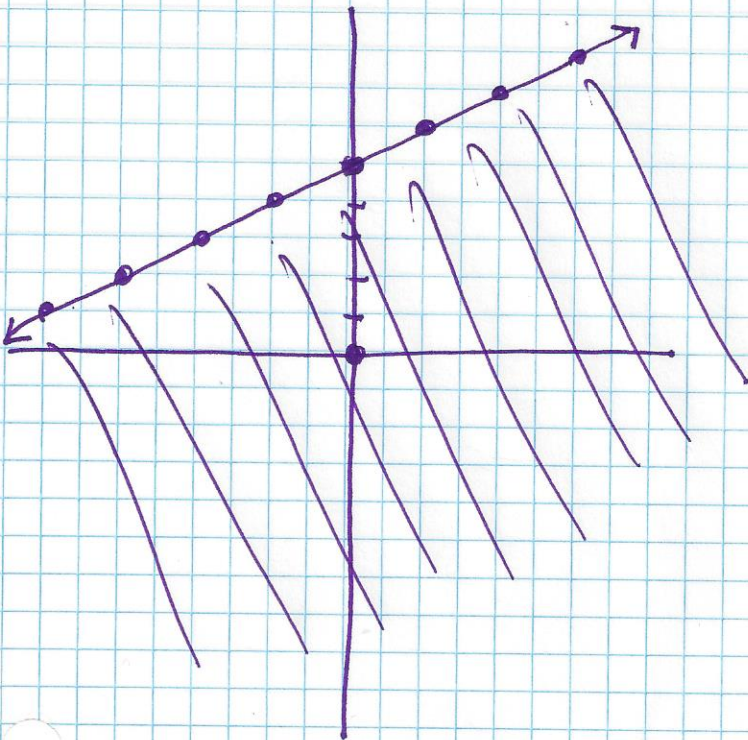


$$(26) \quad y > 1 - \frac{1}{2}x$$



$$0 \leq 0 + 5 \quad T$$

$$(27) \quad y \leq \frac{1}{2}x + 5$$



① (1, 3)

②  $\emptyset$

③ Infinite solutions

④ (-1, 10)

⑤ (-1, 3)

⑥ (4, 0)

⑦ (3, 4)

⑧ (8, -2)

⑨ (2, 1)

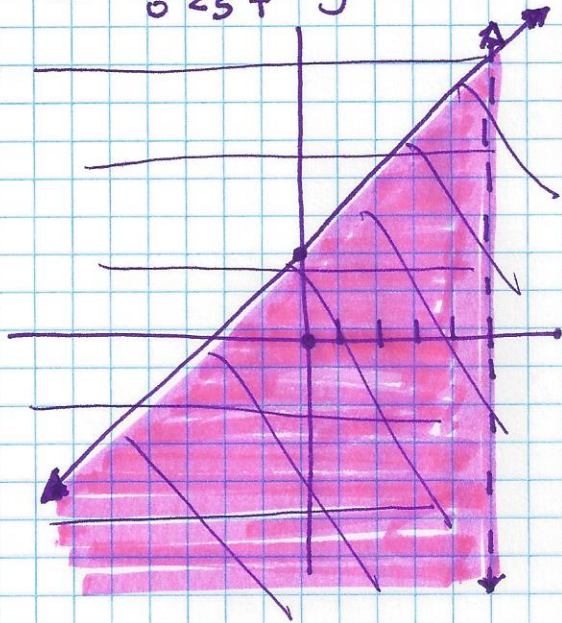
⑩ (-4, -8)

⑪ (3, -3)

⑫ (-1, 5)



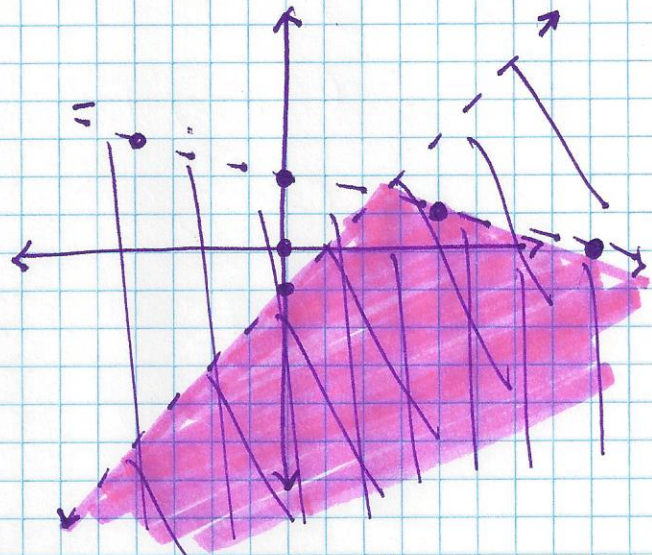
⑬  $x < 5$   $y \leq x + 2$   
 $0 < 5$  T



⑭  $x - 1 > y$

$y < x - 1$   
 $0 < 0 - 1$  F

$y < -\frac{x}{4} + 2$   
 $0 < 0 + 2$  T



⑱ There are 104 English speaking countries and 26 Farsi speaking countries.

⑲ Gloves cost \$8.50 and hats cost \$6.50

⑳  $y = -2x - 5$

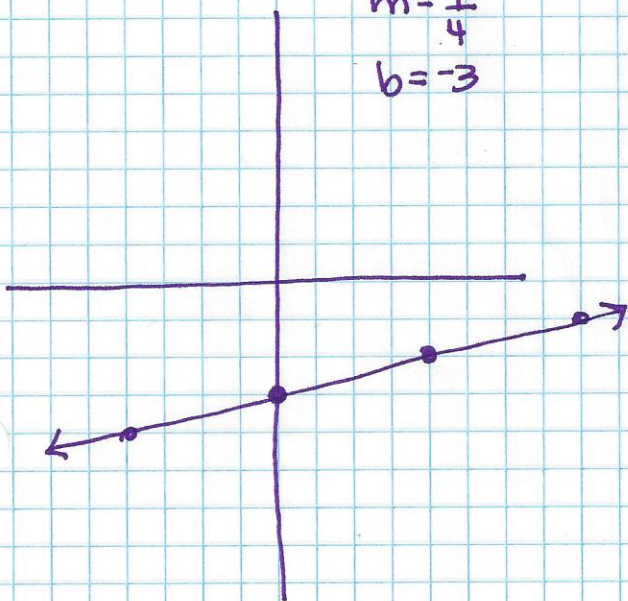
㉑  $y = -3x + 10$

㉒  $y = -\frac{1}{3}x + 2$

㉓  $y = -7x + 21$

㉔  $y = \frac{1}{4}x - 3$

$m = \frac{1}{4}$   
 $b = -3$



㉕  $\frac{2y}{2} = \frac{8x}{2} + \frac{4}{2}$   
 $y = 4x + 2$

$m = \frac{4}{1}$   
 $b = 2$

